



Material Master Data Solutions

Collect. Clean. Govern. *Apply.*



MRO Material Master Data Collection



Leverage IMA's specialized tools and subject matter expertise to complete laborious onsite MRO part identification and data collection projects.

IMA offers a variety of onsite MRO part identification, validation, and data collection services to efficiently record on-hand inventory data for upload into the live ERP / EAM / CMMS system. Whether you intend to standardize data internally or proceed to implement a Data Cleansing initiative with IMA, the first step is to obtain the required data.

Based on the scope of work to be performed, IMA will assign a dedicated team of onsite subject matter experts to identify, record, and transmit detailed MRO part information. IMA will prepare the acquired data according to the pre-defined business requirements and return the completed file electronically. The collection of this data provides companies the opportunity to populate the live enterprise system with accurate part information, thereby assisting with the issue, purchase, and receipt of MRO/Indirect materials.



Service Features

- ✓ Onsite Team of IMA Subject Matter Experts
- ✓ Travel, Accommodations, and Onsite Project Managed By IMA
- ✓ Data Collection Performed Using Android Tablet(s)
- ✓ Proprietary Data Collection Application
- ✓ Built-In Camera for Image Capture
- ✓ Pre-Defined Noun-Modifier Dictionary for Accurate Part Identification
- ✓ MFG, P/N, Item #, Description, and Bin Location Data Obtained Where Available
- ✓ Cycle Count and/or Inventory Quantity Validation
- ✓ Data Export and File Preparation



Request a Quote

Our Account Managers are standing by to assist you with your Onsite Data Collection requirements. Contact us today to discuss your scope of work and obtain a detailed project proposal.

[REQUEST QUOTE](#)

MRO Material Master Data Cleansing



Service Levels and Features	Level 1 Cosmetic Cleanse	Level 2 Standardization	Level 3 Enhancement
Custom Developed Standard Operating Procedure	✓	✓	✓
Assign Unique Record ID and IMA Control Number	✓	✓	✓
Correct Spelling Mistakes	✓	✓	✓
Convert Text to Desired Format (Upper/Proper Case)	✓	✓	✓
Standardize Manufacturer Name	✓	✓	✓
Standardize Manufacturer Part Number	✓	✓	✓
Assign Noun-Modifier Based on Pre-Defined Dictionary	✓	✓	✓
Identify "Review" Items With Invalid or Insufficient Part Information	✓	✓	✓
Identify Potential Duplicate Items Within and Across Sites	✓	✓	✓
Assign Customer Specified Commodity Codes (Additional Charge)	✓	✓	✓
Quality Control Review	✓	✓	✓
Format Cleansed Data to Pre-Defined Upload Template	✓	✓	✓
Standardize and Validate Existing Attribute Information		✓	✓
Provide Attribute Enhancements Using IMA Library, Online Research, & MFG Catalogs			✓

Raw Customer Data

25mm Brg, two seals, 62052rs, SKF

Level 1 - Cosmetic Cleanse

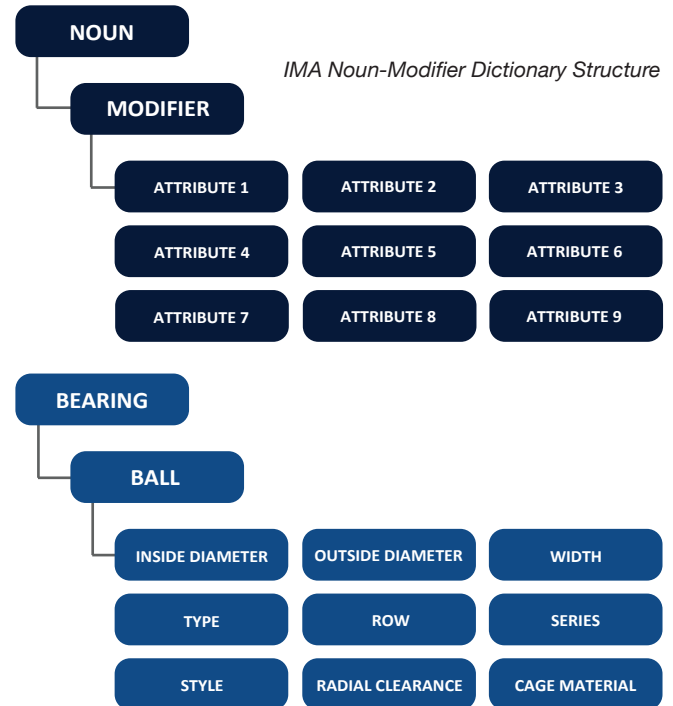
BEARING, BALL, SKF, 6205-2RS

Level 2 - Standardization

BEARING, BALL, 25 MM ID, TWO SEALS, SKF, 6205-2RS

Level 3 - Enhancement

BEARING, BALL, 25 MM ID, 52 MM OD, 15 MM WD, CONRAD, SINGLE ROW, LIGHT DUTY, 2 SEALS, STEEL, SKF, 6205-2RS



No Cost, No Obligation MRO Data Evaluation

Submit a data sample today to learn the current condition of your Material Master and discover the potential cost savings hidden within. Receive actual before & after samples of your own data, cleansed and structured to industry best-practice standards and formatted to your enterprise system.

[GET STARTED](#)

MRO Material Master Data Cleansing



Service Levels and Features

IMA is proud to support various international and custom Product Classification systems to suit the unique requirements of each customer. Based on the business objectives, industry, and application, IMA is able to accurately implement and maintain product group (class) codes and descriptions for each individual material record, enabling maximum spend visibility and leverage opportunities.

IMA Product Group Classification System

IMA Internally Developed Classification System

The IMA Product Group Classification system has been developed based on 25+ years of industry experience to enable accurate part identification and spend visibility.

- 4-Digit Code Format
- 7 Parent Categories
- Over 75 Sub-Categories
- Customizable to suit business requirements

International Classification Systems

UNSPSC and eCl@ss

IMA supports various international classification systems, including but not limited to, UNSPSC and eCl@ss. Both systems are widely implemented to provide a multi-sector standard for accurate identification and classification of products and services.

UNSPSC

- XX – Segment
- XXXX – Family
- XXXXXX – Class
- XXXXXXXX – Commodity

eCl@ss

- XX - Segments
- XX-XX - Main Groups
- XX-XX-XX - Groups
- XX-XX-XX-XX - Commodity Classes

Custom Classification Systems

Internal Classification System

IMA is able to adopt and implement Custom Classification Systems as required and instructed by the customer. Custom Classification may include various country-specific tax coding, industry-specific systems, and any unique schema that has been developed and utilized internally by a customer.



Request a Quote

Our Account Managers are standing by to assist you with your Product Classification requirements. Contact us today to discuss your scope of work and obtain a detailed project proposal.

REQUEST QUOTE

MRO Material Master Data Governance



Service Levels and Features	uManage Gatekeeper	uManage Turnkey	Direct Connect
Secure Web Portal Access	✓	✓	✓
Role-Based User Login and Process Workflow	✓	✓	✓
Real-Time Email Notification System	✓	✓	✓
Multi-Layer Approval Process	✓	✓	✓
Detailed Audit Trail and Time Stamping	✓	✓	✓
Batch Upload for High Volume Entries	✓	✓	✓
uView Enterprise Visibility	✓	✓	✓
Detailed Report Generation	✓	✓	✓
24-Hour Turnaround Time (Up to 100 Items Daily)	✓	✓	✓
Dedicated IMA Data Governance Specialist	✓	✓	✓
Direct ERP / EAM / CMMS Login and Uploading		✓	✓
Enterprise System Independence			✓

uManage Gatekeeper

Web-Based, Non-Integrated

Requests are submitted using the uManage Web Portal and returned in a load-ready file via email notification.

uManage Turnkey

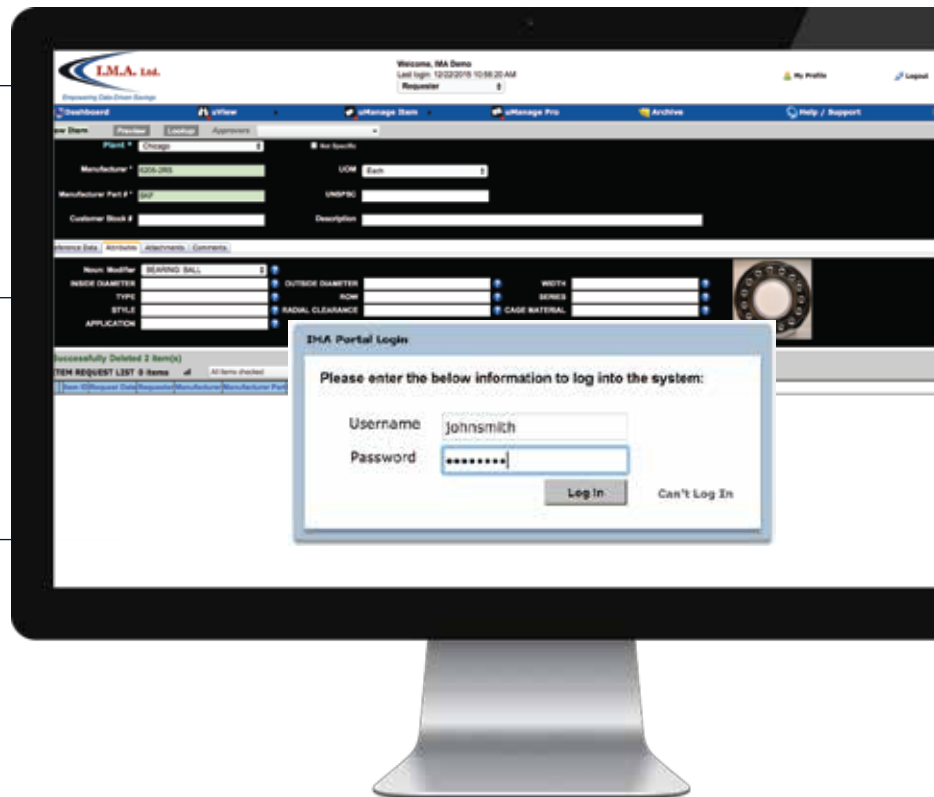
Web-Based, Enterprise System Access and Uploading

Requests are submitted using the uManage Web Portal and uploaded directly to the live enterprise system by a dedicated IMA Data Governance Specialist.

Direct Connect

Direct Enterprise System Integration

Item creations and modifications are entered within the live enterprise system. An automated routine “sweep” is performed every 60-minutes to capture all recent updates. Identified new and modified records are cleansed to corporate standards and updated in real-time.



Request a uManage Demo

Looking for an efficient and cost-effective solution to maintain ongoing integrity of your materials data? Request a live uManage demo and service proposal today to learn how user-friendly and convenient our web-based solution can be.

REQUEST DEMO